



**Keystone Emergency
Management Association**
2019 Emergency Preparedness Conference

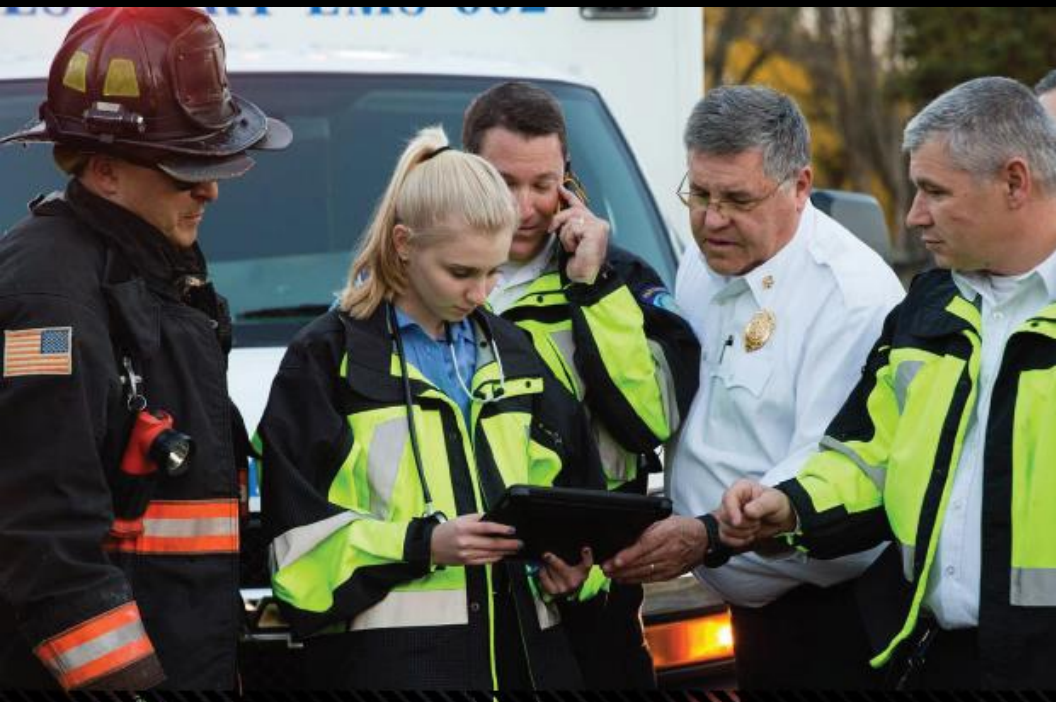


October 27, 28, and 29, 2019

Blair County Convention Center

Altoona, PA

#KEMACon2019



Built for you. Inspired by you.

Together we can advance public safety.

First responders are the force behind FirstNet. It's the only wireless broadband network created with and for first responders. With First Priority™, first responders get a dedicated "fast lane" with the priority and preemption they need to keep our communities – and themselves – safe.

Get the facts at FirstNet.com

Table of Contents

Table of Contents 3

Schedule of Activities 4

KEMA Mission and Vision 5

KEMA Executive Board 5

2019 KEMA Conference Committee 5

Opening Ceremonies 6

 Master of Ceremonies: 6

 Keynote Speaker 7

Blair County Convention Center Map 8

KEMA Annual Meeting Agenda 10

KEMA Annual Dinner 10

Sunday Educational Presentations Schedule 11

Sunday Course Descriptions 12

Monday Educational Presentations Schedule 16

Monday Course Descriptions 17

Tuesday Educational Presentations Schedule 22

Tuesday Course Descriptions 23

Conference Faculty 26





Schedule of Activities

Sunday, October 27		
Times	Event	Location
11:00 am – 4:00 pm	Registration Open	Allegheny Mountains Lobby
1:00 pm – 2:30 pm	Educational Presentations	Rooms 202 to 208
2:30 pm – 3:00 pm	BREAK – <i>Coffee & Snacks provided</i>	Grand Lobby
3:00 pm – 4:30 pm	Educational Presentations	Rooms 202 to 208
4:30 pm – 6:00 pm	Vendor Showcase – <i>Hors d'oeuvres & Cash Bar</i>	Grand Lobby
5:00 pm – 6:30 pm	PA VOAD Annual Meeting	Ballroom 1
6:30 pm – 9:00pm	PA VOAD Annual Dinner	Ballroom 1
8:00 pm – 10:00 pm	Social Media and PIO Happy Hour	Courtyard Marriott Lobby/Bar

Monday, October 28		
7:00 am – 3:00 pm	Registration Open	Allegheny Mountains Lobby
7:00 am – 8:00 am	Breakfast	Ballroom 3
8:00 am – 6:00 pm	Vendor Area Open	Grand Lobby
8:00 am – 9:00 am	Opening Ceremony & Welcome	Ballroom 3
9:00 am – 10:00 am	Keynote Speaker	Ballroom 3
10:00 am – 10:30 am	BREAK – <i>Coffee provided</i>	Grand Lobby
10:30 am – 12:00 pm	Educational Presentations	Rooms 202 to 208
12:30 pm – 1:00 pm	LUNCH	Ballroom 3
1:00 pm – 2:30 pm	Educational Presentations	Rooms 202 to 208
2:30 pm – 3:00 pm	BREAK – <i>Coffee & Snacks provided</i>	Grand Lobby
3:00 pm – 4:30 pm	Educational Presentations	Rooms 202 to 208
5:00 pm – 6:00 pm	KEMA Annual Meeting	Ballroom 1
6:00 pm – 8:00 pm	KEMA Annual Dinner & Awards Ceremony	Ballroom 3

Tuesday, October 29		
7:30 am – 9:00 am	Registration Open	Allegheny Mountains Lobby
7:30 am – 8:30 am	Continental Breakfast	Ballroom 3
08:30 am – 10:00 am	Educational Presentations	Rooms 202 to 208
10:00 am – 10:30 am	BREAK – <i>Coffee & Snacks provided</i>	Grand Lobby
10:30 am – 12:00 pm	Educational Presentations	Rooms 202 to 208



KEMA Mission and Vision

The MISSION of the Keystone Emergency Management Association is to promote, support, and advocate comprehensive emergency management at all levels of Pennsylvania’s public and sectors.

The VISION of the Keystone Emergency Management Association (KEMA) is that KEMA shall be recognized by the Pennsylvania emergency management community as a results-driven organization of emergency management professionals dedicated to protecting lives and property from both human-caused and natural disasters.

KEMA Executive Board

President – Roy Shipley
Vice President – Jerry McAteer
Treasurer – Tony Przychodzien
Secretary – David Bjorkman

Western Area

President: Matthew Exley
Director: Robert Gerlach

Central Area

President: Tony Subbio
Director: Evalyn Fisher

Eastern Area

President: Chris Grim
Director: John Matz

PEMA Liaison – David Nitsch
IAEM/Ex-Officio – John Conklin

2019 KEMA Conference Committee

Co-Chairs

Amy Kate Amer, *Chester County Department of Emergency Services*
Robert Gerlach, *Allegheny County Department of Emergency Services*

Members

Shannon Evans, *Allegheny County Department of Human Services*
Matthew Exley, *Evangelical Community Hospital*
Tony Przychodzien, *Chester County Department of Emergency Services*
Roy Shipley, *Fayette County Emergency Management Agency/911*

Opening Ceremonies

Master of Ceremonies: Paul Falavolito

You may recognize Paul Falavolito as the host of the **KEMA Podcast**, but he is a man of many talents. Not only is Paul the Chief of White Oak EMS, located just outside of Pittsburgh, Pennsylvania; he also serves as the Deputy Emergency Management Coordinator for the Borough of White Oak. Mr. Falavolito is also a published photographer and author having published two photography books in 2018; [Through my Lens](#) and [Through my Lens: Innocence](#) and most recently: [The 7 Minute Leadership Handbook](#). All are available on Amazon.



Monday, October 28		
8:00 am	Opening Remarks & Welcome	Mark Taylor <i>Director of Public Safety</i> Blair County Department of Emergency Services
8:10 am	Presentation of Colors	Altoona Fire Department Honor Guard
8:15 am	Pledge of Allegiance, <i>followed with a moment of silence</i>	
8:25 am	KEMA President's Welcome	Roy Shipley <i>Director</i> Fayette County 911 / EMA
8:35 am	PEMA Welcome	Tim Sevison <i>Deputy Director for Response</i> Pennsylvania Emergency Management Agency
9:00 am	Keynote Speaker	Michael Sharon <i>Deputy Superintendent</i> FEMA Emergency Management Institute



Keynote Speaker

Michael Sharon

Deputy Superintendent, Emergency Management Institute

Michael Sharon is the Deputy Superintendent at the Emergency Management Institute (EMI) in Emmitsburg, MD. EMI is part of FEMA's National Preparedness Directorate (NPD). He was previously the Federal Preparedness Coordinator and National Preparedness Division Director at FEMA Region III, the Operations Planning Branch Chief, and Regional Integration Branch Chief. He was also assigned as Chief of the Regional Response Coordination Center staff and as an Incident Management Assistance Team Leader during multiple disasters and National Special Security Events.



Mr. Sharon began his Federal career at the U.S. Department of State, where he helped develop the Department's all-hazards emergency management and business continuity programs from 2004 to 2009. He also represented State at FEMA's National Response Coordination (NRCC).

Prior to Federal service, Mr. Sharon was the Chief of the Emergency Response Division at the MD Department of the Environment, with responsibility for statewide hazardous materials response and nuclear power plant preparedness. He responded to countless emergencies including pipeline ruptures, hazardous material train derailments, flammable tank truck accidents, and suspicious substance incidents. He began his emergency management career as the Exercise Officer for the MD Emergency Management Agency (MEMA). He later served as the state's exercise/training specialist for the Chemical Stockpile Emergency Preparedness Program (CSEPP) before being selected as MEMA's Assistant Director for Operations. In that role, he supervised MD's emergency operations center through multiple activations and supported the Governor's Flood Mitigation Task Force where he identified Federal, state, and local

programs that were used to acquire over 200 flood-prone structures and other community mitigation measures.

Mike retired from the U.S. Army after 28 years in the Regular Army, Maryland National Guard, and Army Reserve. He is trained as a military police officer and had many diverse assignments including logistics operations during Operation Iraqi Freedom and over 8 years as an Emergency Preparedness Liaison Officer (EPLO). As an EPLO, he supported the response to the September 11 terror attacks, Hurricane Isabel, Hurricane Katrina, and the 2009 Presidential Inauguration. He earned a Master of Strategic Studies degree from the U.S. Army War College, a Master of Public Administration degree from the University of Baltimore, and a Bachelor of Arts degree from LaSalle University (Magna Cum Laude) with dual majors in sociology and criminal justice.



FEMA | *Emergency Management Institute*



#SocialMedia & #PIO #HappyHour

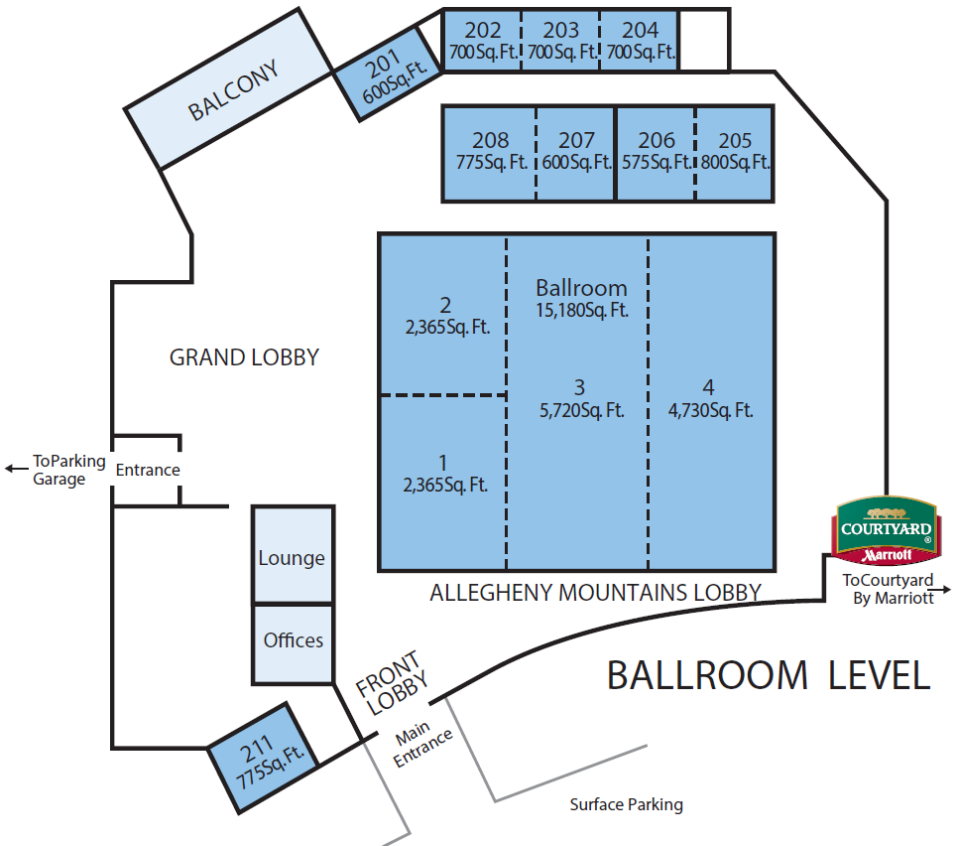


Lobby & Bar of the Courtyard by Marriott on Sunday, October 27th from 8 PM to 10 PM.

#SMEM

Blair County Convention Center Map

The Blair County Convention Center is just south of Altoona, Pennsylvania is strategically located along Interstate 99 between the PA Turnpike and Interstate 80. It has a “Warm & Inviting Charm” and has all the features of a big city convention center.



KEMA Annual Meeting Agenda

Monday, October 22	
<p>5:00 pm</p> <p>Ballroom 1</p>	<ul style="list-style-type: none"> • Call to Order • Roll Call of Members Present • Reading of Previous Meetings Minutes • Reports of Officers and Committees • Stakeholder Reports • Unfinished Business • New Business • Elections • Installation of Officers and Directors • Good of the Association • Adjournment

KEMA Annual Dinner

Monday, October 22 – 6:00 pm – Ballroom 3

No charge to KEMA Members. Non-KEMA Members must pay \$50 to participate. The dinner menu will be the Chef’s Choice which will include Chef selected beef, poultry and seafood entrées, a potato, rice or pasta selection, a vegetable medley, a Chef selected salad du jour, mixed greens with tomatoes, red onions, cucumbers, cheddar cheese, olives, croutons and assorted dressings, and a Chef selected preset dessert.



One Convention Center Drive, Altoona, PA 16602
 1-877-447-5621 • 1-814-943-5392 • info@blaircc.net
 blairconventioncenter.com

Sunday Educational Presentations Schedule

October 27, 2019		
Times	Title	Room
1:00 pm – 2:30 pm	Interface of Emergency Behavioral Health and Emergency Management	202 & 203
	Exploring NWS and EMA Virtual Decision Support Service Capability	204
	Will You Be Lost Without a VOST?	205
	Damage Assessment Made Easier	206
	The Importance of Action over In-Action: Mitigation and Building Community Resilience	207
	FAST: A Deployable Team to Serve Disaster Impacted Access and Functional Needs Populations	208
2:30 pm – 3:00 pm	BREAK	Grand Lobby
3:00 pm – 4:30 pm	Building and Maintaining Effective Relationships with Public Officials / Volunteer Emergency Services Companies	202 & 203
	xView 2.0: A Challenge for Building Damage Assessment from Satellite Imagery	204
	Natural Disasters: Knowing is Half the Battle	205
	The Future of EMS: Community Paramedicine	206
	Engaging the Community and Creating Resilience	207
	Embracing Transformation: A Path Forward for the New Emergency Communications Ecosystem	208





Sunday Course Descriptions

Interface of Emergency Behavioral Health and Emergency Management

Speaker(s): **Jannetti, Frank, BS.** *Director, Mercer County Department of Public Safety*
Thompson, Dyana, BA. *Mercer County EBH Coordinator, Mercer County Behavioral Health Commission, Inc.*

Description: This presentation will provide an overview of Emergency Behavioral Health (EBH). What is it, why is it important, and when to include it in Emergency Management planning and response. Specific examples of the interactions of EBH and EMA will be provided.

Exploring NWS and EMA Virtual Decision Support Service Capability

Speaker(s): **Fred McMullen, MS.** *Warning Coordination Meteorologist, National Weather Service – Pittsburgh*
Matt Steinbugl, BS. *Meteorologist, National Weather Service - State College*
Jeff Jumper, MS. *State Meteorologist, PEMA*

Description: Emerging technologies can offer enhanced virtual capabilities to provide decision support services (DSS) to emergency management partners. Virtual DSS capabilities provide the means to connect remotely, and most importantly interactively, with emergency management partners in a way that better conveys confidence and urgency via voice and body language. The changing needs of emergency management partners, and the continual evolution of technology, require the exploration and implementation of technological methods to provide live and recorded remote DSS. Technologies that could support expanded Virtual IDSS include Join-Me, GoTo Meeting/Webinar, Google Hangouts, Skype, NWSChat and Live Streaming social media platforms such as Periscope and Facebook Live. We plan to test, pilot, and prove a live, all-hazards virtual NWS decision support portal capability at local, county and state levels, while leveraging the latest web-based technology to support a virtual emergency operations center-style open-portal concept. We will demonstrate value-added products and services to enhance decision support and empower decision makers prior to virtual/remote request or on-site deployment. Examples may include live scenario-based tests of Hysplit, SPOT forecasts, river products, etc. Finally, we will provide a status update on future county-based weather station procurement opportunities to expand IFLOWS through Keystone Mesonet.

Will You Be Lost Without a VOST?

Speaker(s): **Tim Elbertson.** *Community Outreach Coordinator, Montgomery County Department of Public Safety*

Description: Get introduced to the concept of a Virtual Operations Support Team – a group of trained volunteers working as extra sets of eyes, ears, and hands during incidents and events in today’s fast-paced world of information. We’ll share examples of how a VOST has already been used in the Southeastern PA region for the 2015 Papal Visit and the 2016 Democratic National Convention, and we’ll end the session with an exercise on putting a VOST into action with your agency.

Damage Assessment Made Easier

Speaker(s): **Shen Kreiser.** *Nuclear Planner, York County Office of Emergency Management*

Description: Get introduced to the concept of a Virtual Operations Support Team – a group of trained volunteers working as extra sets of eyes, ears, and hands during incidents and events in today’s fast-paced world of information. We’ll share examples of how a VOST has already been used in the Southeastern PA region for the 2015 Papal Visit and the 2016 Democratic National Convention, and we’ll end the session with an exercise on putting a VOST into action with your agency.

The Importance of Action over In-Action: Mitigation and Building Community Resilience

Speakers(s): **Michael Brown, Ph.D.** *Core Faculty Emergency Management, Capella University/ O.W.O.W., Inc.*

Description: Despite the disaster preparedness empirical literature and data supporting cost-effect benefits and return on investment in promoting mitigation, more attention is needed regarding links between mitigation and communities’ actions or inaction. Failure to remember and exploit lessons learned for developing best practices, which are the foundation of developing policies, will result in loss of lives, damage to the environment and public and private property. Community resilience is inextricably connected to legislative policy and this was evident in the aftermath of the 2017 Hurricane focusing events. Communities working with elected officials can improve and build resilience if they: a) remember lessons learned, b) build a repository of best practices, and c) use the lessons learned and best practices to develop effective sustainability and resilience public policy. Negative consequences and outcomes can be linked to actions or inactions of persons entrusted to reduce vulnerability and manage risk. Today’s unpredictable global environment means it is important for emergency management professionals and public administrators to be heard by the community and elected officials. Building community resilience using mitigation and strategic long-term planning can only occur if there is buy-in and collaboration between all partners in the decision and policy making process.

FAST: A Deployable Team to Serve Disaster Impacted Access and Functional Needs Populations

Speakers(s): **Christine Heyser.** *Disaster Program Coordinator, PA Department of Human Services*

Laura Szweda. *Disability Inclusion Specialist, Abilities in Motion*

Description: Though disasters vary in type and scope, they disproportionately affect people with disabilities and others with access and functional needs. Functional Assessment Service Teams (FAST) evaluate needs and assist in obtaining resources so individuals can maintain their health, safety, and independence. FAST assists with providing accommodations so that all disaster survivors have access to available programs and services. Providing proper accommodations helps to avoid inappropriate institutionalizations and meet legal obligations. FAST may respond to a variety of declared or non-declared disaster locations including disaster shelters, Disaster Recovery Centers or Multi Agency Recovery Centers, Community Reception Centers, Reunification Centers, Points of Dispensing, Points of Distribution, or other community locations. FAST is a way to leverage the subject matter expertise of local level

disability partners including Centers for Independent Living, and to operationalize these nontraditional disaster responders. The PA Department of Human Services is coordinating the initial development of FAST in the Commonwealth including the delivery of FAST training and the recruitment, rostering, and retention of FAST members. In this session we will discuss the formation of partnerships for regional level FAST development and response.

Building and Maintaining Effective Relationships with Public Officials / Volunteer Emergency Services Companies

Speaker(s): **Jerome Ozog, MPA, EFO, MEP.** *Executive Director, Pennsylvania Fire and Emergency Services Institute*

Description: All volunteer emergency services organizations have to interact with local government officials. Those officials elected or appointed may hold tremendous power over the organization. Too many times an emergency service organization only communication with local government is at budget time or when a crisis occurs. Positive relationships with public officials are essential to providing the best possible service to your community. This session will identify why unclear expectations between public officials and leaders of emergency services organizations can lead to problems. Solutions to those problems may be easier than expected. As they say, it's all about relationships.

xView 2.0: A Challenge for Building Damage Assessment from Satellite Imagery

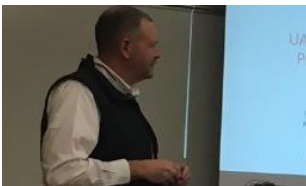
Speaker(s): **Ritwik Gupta, BS.** *Machine Learning Research Scientist, Carnegie Mellon University*

Description: The Department of Defense and Carnegie Mellon University are releasing a massive dataset (>5000 km²) of labeled satellite imagery with polygons and damage classifications for a large variety of disaster types spread around the world. We are launching this as an open data machine learning challenge. This presentation will explain the dataset, the challenge, and how we will make everything operationally relevant to first responders and partners at different government agencies.

Natural Disasters: Knowing is Half the Battle

Speaker(s): **John Evans, MA.** *Chief Operations Officer, Front Sight Protection*

Description: A Natural Disaster is usually defined as any event or force of nature that has catastrophic consequences. They can strike an area at any time and while on some cases there might be time for incident preparedness, in most occasions' preparedness falls short on what the needs are post-disaster. Its effects can range significantly from low to extreme impact resulting in costly material damages and the worse, the loss of life. Additionally, financial losses can surpass expectations as recovery efforts might take longer than expected. Traditionally, natural disasters have a greater economic impact than any other events. In order to prevail against disasters, decision makers must come to realize that this is a collective, not an individual effort. To lessen the impact caused by the disaster, people need to be educated and trained on how to respond.





The Future of EMS: Community Paramedicine

Speaker(s): **Brandon Wattai, BS, EMT-P.** Program Supervisor Life Lion EMS Community Paramedicine, Penn State Health Milton S. Hershey Medical Center
Jason Druschel, EMT-P. Community Paramedicine Field Clinician, Penn State Health Milton S. Hershey Medical Center

Description: Expanding on a presentation for last year's KEMA conference, this will take a deeper dive into the Community Paramedicine model. Topics will include an overview and introduction to the CP model, various types of programs, the implications of Community Paramedicine for the evolution of EMS, an examination of a successful Community Paramedicine program in South Central PA, and a look at a developing disaster-recovery protocol.

Engaging the Community and Creating Resilience

Speaker(s): **MaryAnn Tierney.** *Region III Administrator, Federal Emergency Management Agency*

Description: FEMA Region III, Regional Administrator MaryAnn Tierney will discuss the modern emergency manager's duty to implement strategic community engagement initiatives and empower their community members to become more resilient. The community engagement and resilience discussion will take a look at planning, outreach, preparedness, response and recovery as well as explain new changes in the post disaster process while examining current best practices and sharing lessons learned from recent disasters.

Embracing Transformation: A Path Forward for the New Emergency Communications Ecosystem

Speaker(s): **Brian Melcer.** *Program Manager, Mission Critical Partners*

Description: The evolution of the emergency communications system is a five-stage process that looks dramatically different from the linear model of traditional call delivery, processing and dispatch. It involves images, text, video and rich data being delivered to the PSAP with resilient broadband systems like Next Generation 911 and 5G networks. It means implementing new ways to analyze voice and data sources like IoT to improve situational awareness – And it involves first responders being alerted to emergencies in real-time with radio and LTE networks, like FirstNet, to improve life safety outcomes.

NOT A MEMBER OF KEMA?

Join today! Go to the Registration Table for more information or join online at <http://www.KEMA-PA.org>

KEMA provides a state-wide forum for the exchange of ideas, techniques, and best practices in Emergency Management. If you are an emergency management professional looking to expand your network by connecting with colleagues, seeking information on the issues concerning your area, or looking to further increase your knowledge of the field, then consider becoming a member of KEMA today! Membership is open to all Emergency Management and public safety professionals in local, state, or federal government, non-profit or voluntary organizations, private sector, or to any individual interested in gaining an understanding of comprehensive emergency management in the Commonwealth.



Monday Educational Presentations Schedule

October 28, 2019		
Times	Title	Room
8:30 am – 12:00 pm	A Disaster Behavioral Health Responder’s Guide to Intelligence	205
10:00 am – 10:30 am	BREAK	Grand Lobby
10:30 am – 12:00 pm	Pennsylvania's Unified Approach to the Opioid Crisis	202 & 203
	Disaster to DLOC, Case Review of an SBA Declaration	204
	Workplace Violence Through the Five Phases of Emergency Management	206
	How County Emergency Services and Volunteer Organizations Can Thrive Together	207
	Feeding the Information Beast: Data and information management and visualization in mass care and individual assistance	208
12:00 pm – 1:00 pm	LUNCH	Ballroom 3
1:00 pm – 4:30 pm	Extremism and Targeted Violence: The Evolving Threat Landscape Time	205
	Building Bridges Between 1st Responders and People with Access and Functional Needs (Part 1 – <i>continues Tuesday</i>)	208
1:00 pm – 2:30 pm	Situational Intelligence for Effective Decision-Making	202 & 203
	Breaking the Silence on the Realities of LODD Impacts to Agencies, Personnel, and Families.	204
	Cybersecurity in Converged Public Safety Networks	206
	Making Exercises Fun Using the HSEEP Process	207
2:30 pm – 3:00 pm	BREAK	Grand Lobby
3:00 pm – 4:30 pm	One Moment, One Bullet and My Life Forever Changed	202 & 203
	Leveraging Public-Private Partnerships	204
	Doing Less with More: A Discussion on International Crisis Response and Recovery	206
	Collegiate Exercise Program (The Clery Act)	207



Monday Course Descriptions

A Disaster Behavioral Health Responder's Guide to Intelligence

Speaker(s): **Steve Crimando, MA, BCETS, CHS-V.** *Principal, Behavioral Science Applications*

Description: In the immediate wake of 9/11, executive orders by the President and many Governors mandated that all potential responders to disasters, emergencies and acts of terrorism be trained in and work within the structure of the Incident Command System. Anticipating that Disaster Behavioral Health Responders may be activated and deployed to Homeland Security Sensitive assignments, it is equally important that all responders incorporate protecting the Homeland against terrorism into their daily mission. All types of emergency response personnel play a vital role in detecting and preventing attacks because of the nature of their work, their frequent interaction with members of the public, and the level of access their work provide. People who serve in these roles often can identify behaviors or activities that could signal a pending terrorist attack; therefore, emergency responders must continue to report, according to the Nationwide Suspicious Activity Reporting Initiative, observations that raise reasonable suspicion. The Intelligence Community routinely produces information for emergency response personnel that may help responders identify terrorist-related activities and prevent, deter, or respond to terrorist attacks. It is critical that emergency responders, who are entrusted with safety, security and wellbeing of our citizens, be able to access, understand, and use this Homeland Security-related information in the proper manner.

Pennsylvania's Unified Approach to the Opioid Crisis

Speaker(s): **David Nitsch, MPH, NRP.** *Director/Bureau of Technological Hazards, PEMA*
Amy Wasko, BS. *Public Health Program Administrator, PA Department of Health*

Description: This session will discuss the multi-agency, multi-faceted approach to addressing the opioid crisis gripping Pennsylvania. The presenters will discuss the structure of the Opioid Coordination Group, the initiatives, successes and challenges and potential paths forward for this crisis.

Disaster to DLOC, Case Review of an SBA Declaration

Speaker(s): **Steve Imbarlina.** *Deputy Director/Assistant Chief, Allegheny County Department of Emergency Services*
Robert Gerlach, MPA. *EMA Specialist/Training & Exercise Coordinator, Allegheny County Department of Emergency Services*

Description: This presentation follows the recovery process of the July 20th flash flooding events that severely impacted the eastern portion of Allegheny County. The Case Review will walk the participants through the massive coordinated damage assessment process through the close of the SBA DLOC. At the conclusion of the session, participants should have a better understanding of what need to be accomplished and how to more efficiently completed necessary tasks to aid in recovery efforts.



Workplace Violence Through the Five Phases of Emergency Management

Speaker(s): **Nora O'Brien, MPA, CEM.** *Chief Executive Officer, Connect Consulting Services, Inc.*

Description: Every year, more two million American workers report being victimized by workplace violence which costs employers more than \$120 billion a year, according to recent estimates by NIOSH. Our session will view workplace violence through the lens of all five phases of emergency management in order to develop a robust workplace violence prevention program. For mitigation, employers need to identify risk factors for employees who may offend and intervene when necessary. For prevention, employers need to create a workplace zero tolerance policy for bad behavior that could lead to potential violence. For preparedness, training, exercises and planning gives muscle memory for employees to know what to do should they need to “run, hide, or fight” when responding to a violent situation. The business continuity functions of recovery should to focus on short term recovery issues such as chain of custody for police evidence and crisis communications and the long-term recovery needs should address employee post- traumatic stress disorder (PTSD) and loss of building access. Speakers will lastly lead a discussion to ask the audience members who have dealt with workplace violence events to share their strategies and tools to keep workers safe.

How County Emergency Services and Volunteer Organizations Can Thrive Together

Speaker(s): **Amy Marree.** *Emergency Management Planner, Butler County Emergency Services*
Rich Wilson. *Vice President/Director of Volunteerism, Pennsylvania Volunteers Inc.*

Description: A look at the collaborative model, set up between the Butler County Emergency Services and the Pennsylvania Volunteers. We examine what government agencies should be looking for in a volunteer agency AND how a volunteer agency needs to be established with the proper guidelines and training to support and compliment what the government agency is needing. THEN how to work together for a successful outcome for the citizens and both organizations.

Feeding the Information Beast: Data and information management and visualization in mass care and individual assistance

Speaker(s): **Dawn Brantley, BS, AS, JD (12/2029).** *Sheltering Coordinator, Virginia Department of Emergency Management*
Mark Passmore. *Individual Assistance Branch Chief, Alaska Division of Homeland Security & Emergency Management*

Description: Every emergency manager is familiar with the constant demand for information during response and recovery. We call it the “Information Beast” and it comes from agency leadership, media, elected officials, and stakeholders. It is important to be able to provide timely and accurate information on response and recovery actions, but this can be a huge challenge and frustration in the midst of a response. This presentation will discuss information management and data visualization used in Florida’s Hurricane Michael mass care operations and Alaska emergency and individual assistance operations following the 2018 Cook Inlet Earthquake. Topics covered include: Feeding the information beast, collecting information (What information do we need? How do we set up the system to get the data we need? What is the most effective way to capture the information?), Synergizing workflow between agencies and organizations, System integrity and accessibility, visualizing data (What’s going on? Are we making progress? What are the big issues? Identifying batches for



solutions), Documentation of need/Justifying requests, and Planning for the future. CAUTION: Know your privacy laws

Extremism and Targeted Violence: The Evolving Threat Landscape Time

Speaker(s): **Steve Crimando, MA, BCETS, CHS-V.** *Principal, Behavioral Science Applications*

Description: State and federal intelligence agencies continue to rank the threat posed by Homegrown Violence Extremists (HVEs) as the most significant risk to the homeland. A recent report from the U.S. Department of State suggests that the terrorism landscape has become more complex as terrorist organizations and lone actors constantly adapt their tactics. A community's first responders are uniquely poised to help detect and deter HVEs. As the time line from radicalization to mobilization continues to tighten, the need for coordination and cooperation in the area of violence prevention has never been more important.

Building Bridges Between 1st Responders and People with Access and Functional Needs (Part 1) *Continues on Tuesday Morning.*

Speakers: **George Palmer.** *Executive Director, The Center for Independent Living of South Central PA*
Marty Dombrowski, MS. *Assistant Director, The Center for Independent Living of South Central PA*

Description: History proves that People with Access and Functional needs are at great risk during natural disasters and times of crisis. People with AFN are often unprepared for self-care and protection at crucial times when quick decisions are required. Simultaneously, First Responders may be at a loss as to how to deal with AFN residents within their jurisdiction. This course will provide proven methods and strategies for advance preparation, dealing with sensitivity issues, and communication prior to and during the crisis.

Situational Intelligence for Effective Decision-Making

Speaker(s): **Joshua Gelman, MS, MPA, CEM.** *Principal Consultant /Owner, Gelman Integrative Consulting LLC*

Description: Situational intelligence is the dynamic process of gathering information about a situation, interpreting the data, making decisions, and informing others. Nowadays, emergency managers are constantly bombarded with more and more information, while having less time to make sense of it all. In this session, we will explore open-source intelligence (OSINT) sources, data gathering, information visualization, and other tools to help prevent information overload and reduce the risk of analysis paralysis. Applications to natural disasters, technological disasters, and civil disturbances will be discussed. Aligning with this year's conference theme, this session will allow you to literally "discover the possibilities" in the breadth of information available to emergency managers.

Breaking the Silence on the Realities of LODD Impacts to Agencies, Personnel, and Families

Speaker(s): **Mary Beth Eslary.** *Public Information Officer/Community Outreach Coordinator, Westmoreland County Department of Public Safety*
Christopher Tantlinger, BS. *Deputy Emergency Management Coordinator, Westmoreland County Department of Public Safety*



Description: We all understand the basic impacts of LODD, however there are many hidden factors that are overlooked regarding telecommunication officers, agency personnel, families, and scene survivors. This presentation will attempt to bring awareness and highlight those factors. The impact can be lifelong and career ending, and an understanding of these issues may help in the recovery process and help to sustain personnel with support long after the event.

Cybersecurity in Converged Public Safety Networks

Speaker(s): **Mark Perkins.** *Vice President/Direct Lifecycle Management Services Operations, Mission Critical Partners*

Description: In today's increasingly IP-based network environment, some of the biggest threats facing public safety networks are unplanned outages or disruptions. These outages can be caused by hardware or circuit failures—or worse a targeted cyber-attack—and gaps in support agreements and slow vendor response times can increase their severity. During this presentation, Mission Critical Partners will discuss how public safety network management is changing and how agencies must adjust to alleviate their risk.

Making Exercises Fun Using the HSEEP Process

Speaker(s): **Allen Clark, BS.** *Deputy Director for EMA, Crawford County Department of Public Safety*

Description: The Homeland Security Exercise & Evaluation Program can be intimidating to some, but this system provides a standardized program, step by step for everyone to use from the local level to the federal level and everyone in between, to craft a great exercise that tests emergency plans and personnel training. Beginning with objectives based on previous after-action reports and improvement plans, an exercise is crafted to see if the gaps identified have been met with planning, organization, equipment, training, and past exercises. This session will break down the HSEEP process into small bites and identify the pit falls to watch out for from past experiences conducting exercises. A little bit of work in the beginning will produce a great exercise and a great after-action report. There are many great resources available to agencies to help make your exercise as realistic and safe as possible for public safety agencies which will be shared. With over twenty years of planning, training, and exercises, the presenter will share his good and bad experiences facilitating exercises and how to have fun with exercises and using HSEEP as a tool to maintain agencies preparedness.

One Moment, One Bullet and My Life Forever Changed

Speaker(s): **Robyn Wolfe.** *Emergency Management Student, Pennsylvania College of Technology*

Description: The electrifying concert buzzed with excitement in the shadow of the Mandalay Bay hotel in Las Vegas. In a split second, country songs of love and fun turned to wails of terror, as my husband, Bill Wolfe, and 57 others were murdered – and hundreds of others were injured – by a gunman perched out of sight on October 1, 2017. Laying over his bleeding, lifeless body and scrambling to save myself as the only remaining parent my children would ever have was nightmarishly surreal. While I will never fully comprehend why Bill was stolen from us, I am committed to improving the glut of miscommunication, lack of psychological first aid, and insensitivity from media, curious onlookers, and others drawn to tragedy with no helpful purpose. As I push forward through the grief and trauma, I am determined to take our tragedy and exchange it for something positive so that others may

learn. By sharing my experience, I hope others may be able to apply some of my experience, not just with active shooter situations, but with other crises as well.

Leveraging public-private partnerships

Speaker(s): **Molly Dougherty**, FEMA Certified Continuity Manager. Director/External Affairs, PEMA
Patrick Shull, Director/Safety, Security and Risk Assessment, Harrisburg Property Services LLC

Description: How can you leverage local private sector resources to help you plan and prepare for all phases of emergency management? From non-profit to for profit, building relationships with the organizations that support your community can be a critical tool in the emergency manager's tool box. From preparedness through response and recovery, learn how the private sector is a critical partner for your whole community response.

Doing Less with More: A Discussion on International Crisis Response and Recovery

Speaker(s): **David Nitsch, MPH, NRP**, Director/Bureau of Technological Hazards, PEMA

Description: This session will review, compare, and contrast crisis response and recovery from three unique perspectives; humanitarian, armed conflict, and disaster. Based on his firsthand experience, Mr. Nitsch will discuss the similarities and differences of these response and recovery areas, and he will engage the audience in a discussion regarding response versus recovering efforts and whether the current models should shift.

Collegiate Exercise Program (The Clery Act)

Speaker(s): **Christopher Tantlinger, BS**, Deputy Emergency Management Coordinator, Westmoreland County Department of Public Safety

Description: Institutions of higher learning are iconic to their communities and are a microcosm of a global community within themselves. We traditionally had not been integrated or highly involved in emergency planning within these institutions, yet they are a fabric of the community in which they reside and become a global event when a catastrophic or violent event occurs because the students can be from anywhere in the world. The Virginia Tech shooting, University of MD tornado deaths, Texas A&M hazmat evacuation, Toronto College Norovirus outbreak and rioting and vehicle ramming threats are all real-world events. These threats can be exercised and play well into the Clery Act Compliance Part 2: Emergency Response, Notification Guidelines under the Higher Education Opportunity Act (HEOA) of 2008, that prompted colleges and universities to have new rules relating to emergency response, emergency notification, missing student notification, fire safety reporting and hate crime reporting. This presentation will look at an annual program driven by the campuses and facilitated by county emergency management to bring local stakeholders together with the academic collegiate setting and create unique discussion and planning initiatives. A review of an exercise involving a vehicle ramming scenario at a collegiate commencement will be examined.



Tuesday Educational Presentations Schedule

October 28, 2019		
Times	Title	Room
8:30 am – 12:00 pm	Disaster Recovery Challenge: A Poverty Simulation	202 & 203
	Taking School Preparedness to the Next Level	204
	Building Bridges Between 1st Responders and People with Access and Functional Needs (Part 2 – <i>continued from Monday</i>)	208
8:30 am – 10:00 am	Civil Air Patrol and Partnering with Communities	205
	Emergency Management and Human Services: Connections and Innovations for a Comprehensive Response	206
	No Budget? No Problem! Learn how to create your own synthetic media for under \$100.	207
10:00 am – 10:30 am	BREAK	Grand Lobby
10:30 am – 12:00 pm	Birds Eye View - The Essential UAS Information for Emergency Managers	205
	The Strategic Private-Public Sector Partnership that works for Special Events	206
	PA-FirstNet Update in the Commonwealth	207



KEMA Podcast



<https://www.spreaker.com/show/the-kema-podcast>

Tuesday Course Descriptions

Disaster Recovery Challenge: A Poverty Simulation

Speaker(s): **Heyser, Christine.** *Disaster Program Coordinator*

Description: In this session, participants will take part in a simulation to experience obstacles that impact low income community members on a daily basis, and that are exacerbated during disaster recovery. A hands on exploration of how households prioritize needed services and resources is embedded into the scenario.

5.1 million people across the Commonwealth live below or just above the poverty line. As a result, a significant number of households may be more vulnerable during emergencies and disasters due to limited personal resources.

Following the simulation, participants will discuss the implications for disaster response and recovery. Participants will gain an understanding of how to more inclusively and effectively deliver recovery services and programs to low income populations at Multi-Agency Resource Centers (MARC) or similar locations.

Topics explored:

- Increased awareness of wrap-around services and agencies that provide them under blue and possibly grey sky conditions
- Role of poverty and pre-disaster community functioning
- Inclusive service delivery at Multi Agency Resource Centers

Taking School Preparedness to the Next Level

Speaker(s): **Charlie Fendt, MEP, Type 3 IC,PIO,FSC,,LSC.** *Founder, Salus*

Description: Our 3-hour presentation covers the following key points, that are approximately 20-30 minutes for each segment, each having a 5 minute period for questions at the end for each segment. Topics include: Overview and History of School Emergency Planning, starting with the Hazard and Vulnerability Assessment, NIMS and ICS in Schools, defining and filling positions, The Written Plan is useless unless it is brought to life by training and Exercises, Not just Active Shooters, Reunification. and Transportation Planning; the Culture of Preparedness starts Early.

Building Bridges Between 1st Responders and People with Access and Functional Needs (Part 2) *Must have participated in Part 1 Monday afternoon.*

Civil Air Patrol and Partnering with Communities

Speaker(s): **Cindy Gironda, AS.** *Captain, Civil Air Patrol*

Dane V. Carroll. *LtC. Civil Air Patrol*

Description: The Civil Air Patrol has a Mission Statement of 'Supporting America's communities with emergency response, diverse aviation and ground services, youth development, and promotion of air, space and cyber power.' To accomplish this, we work hard to partner with our local community leaders in providing access to services and personnel in times of need. Learn who CAP is as an organization. From Aerial Photography to Air and Ground support for search and rescue operations, CAP offers a wide range of services during times of emergency. CAP also has a lot to offer the local communities in its membership and forward advancement in training of today's youth in STEM and aviation programs.



Emergency Management and Human Services: Connections and Innovations for a Comprehensive Response

Speaker(s): **Sheila Bell, MA.** *Assistant Executive Deputy Director, Integrated Program Services, Allegheny County Department of Human Services*
Shannon Evans, BA. *Emergency/Risk Coordinator, Allegheny County Department of Human Services*

Description: This interactive session will focus how Human Service organizations can structure their response efforts to maximize staff involvement in planning and execution and to streamline connections to external emergency response entities. Presenters will also discuss the unique role human services plays during an emergency and how secondary human service responders can best support those in primary response roles during a crisis.

No budget? No Problem! Learn how to create your own synthetic media for under \$100.

Speaker(s): **Derek Rowan.** *President, Ascentra*

Description: Having news media broadcasts for your players during your exercise greatly enhances realism and decision making. It can provide areas to examine not only with public messaging procedures but also senior official policy decisions. Creating realistic synthetic news media videos has traditionally been costly, requiring specific expertise and equipment. This is no longer the case. During this session, we will demonstrate the setting up of a live broadcast news studio in 5 minutes using off the shelf items you have or can purchase locally or online – for less than \$100. We will create a live broadcast news displayed (and even live streamed) within minutes. This presentation will show how to setup a studio using any camera (including an iPhone or iPad), simple existing practical lights, an inexpensive microphone, and the creation of a simulated newsroom using a green screen you can make yourself – all without any vendors in less time than you think. Having quick access to synthetic media during exercises provides enhanced flexibility to allow real-time or near real-time updates to occur during conduct. Now the SimCell can react to player’s actions and post a news story within minutes. New for 2019 is an interactive method for using PowerPoint to create very realistic damage photos and animations without any special skills for your exercise scenarios! Learn how to take your exercises to the next level by adding professional synthetic media to your exercises.

Birds Eye View - The Essential UAS Information for Emergency Managers

Speaker(s): **Matthew Mallie, BS.** *Emergency Management Specialist, Savior Associates, LLC*

Description: Introduction to the technology, terminology, and real or conceptual applications of Unmanned Aircraft Systems (UAS) as a resource for public safety and as a potential threat which needs to be considered. Examination of past usage, current examples, and proposed future applications of UAS both as a resource and a potential threat will be discussed, along with associated economic or social concerns of public safety UAS use.

The Strategic Private-Public Sector Partnership that works for Special Events

Speaker(s): **Steve Sutch.** *Security Coordinator/Planner, Pearsco Solutions*

Description: A strategic partnership between the public sector and private sector with special events designed to draw a large number of attendees is critical to public safety success. We explore why this partnership is necessary and how it will only benefit the public’s safety. We will explore past special events that adopted a Unified Command that included the private-

public sector and how such events succeeded when all the stakeholders participated in the planning.

PA-FirstNet Update in the Commonwealth

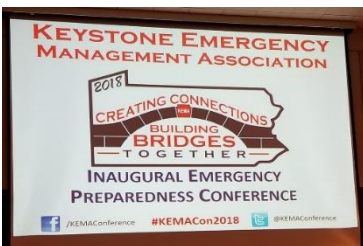
Speaker(s): **Neal Scott, Maj. (Ret).** *Public Safety SME, PA FirstNet*
Dennis Martinez, Ph.D. *LTE Technical Expert, PA FirstNet*

Description: FirstNet will provide first responders with a nationwide wireless data communication service. Following Governor Wolf’s decision to allow FirstNet and their commercial partner, AT&T to build the Radio Access Network (RAN) portion of the NPSBN in Pennsylvania, The PA-FirstNet Team has been working to provide information that will help PA stakeholders make the decision that is right for them since adoption of this network is not mandatory. In PA, the governor appointed the Pennsylvania State Police as the FirstNet SPOC and as the organization that plans and coordinates activities to help define and create the NPSBN. Topics to be covered include: Priority, preemption, PTT, applications; Infrastructure, new towers, deployable towers; Coverage; Governance; and Interoperability challenges.



**Conference Badges
Provided By:**

SALAMANDER
WHEN IT MATTERS





Conference Faculty

A big thanks to our presenters, who without them volunteering their subject matter expertise for the educational benefit of the emergency preparedness community in the Commonwealth of Pennsylvania, this Conference would not be possible.

Sheila Bell, MA. *Assistant Executive Deputy Director, Integrated Program Services, Allegheny County Department of Human Services*

Dawn Brantley, BS, AS, JD (12/2029). *Sheltering Coordinator, Virginia Department of Emergency Management*

Michael Brown, Ph.D. *Core Faculty Emergency Management, Capella University/ O.W.O.W., Inc.*

Dane V. Carroll. *LtC. Civil Air Patrol*

Allen Clark, BS. *Deputy Director for EMA, Crawford County Department of Public Safety*

Steve Crimando, MA, BCETS, CHS-V. *Principal, Behavioral Science Applications*

Marty Dombrowski, MS. *Assistant Director, The Center for Independent Living of South Central PA*

Molly Dougherty, *FEMA Certified Continuity Manager. Director/External Affairs, PEMA*

Jason Druschel, EMT-P. *Community Paramedicine Field Clinician, Penn State Health Milton S. Hershey Medical Center*

Tim Elbertson. *Community Outreach Coordinator, Montgomery County Department of Public Safety*

Mary Beth Eslary. *Public Information Officer/Community Outreach Coordinator, Westmoreland County Department of Public Safety*

John Evans, MA. *Chief Operations Officer, Front Sight Protection*

Shannon Evans, BA. *Emergency/Risk Coordinator, Allegheny County Department of Human Services*

Charlie Fendt, MEP, Type 3 IC, PIO, FSC, LSC. *Founder, Salus*

Joshua Gelman, MS, MPA, CEM. *Principal Consultant /Owner, Gelman Integrative Consulting LLC*



Robert Gerlach, MPA. *EMA Specialist/Training & Exercise Coordinator, Allegheny County Department of Emergency Services*

Cindy Gironda, AS. *Captain, Civil Air Patrol*

Ritwik Gupta, BS. *Machine Learning Research Scientist, Carnegie Mellon University*

Christine Heyser. *Disaster Program Coordinator, PA Department of Human Services*

Steve Imbarlina. *Deputy Director/Assistant Chief, Allegheny County Department of Emergency Services*

Frank Jannetti, BS. *Director, Mercer County Department of Public Safety*

Jeff Jumper, MS. *State Meteorologist, PEMA*

Shen Kreiser. *Nuclear Planner, York County Office of Emergency Management*

Matthew Mallie, BS. *Emergency Management Specialist, Savior Associates, LLC*

Amy Marree. *Emergency Management Planner, Butler County Emergency Services*

Dennis Martinez, Ph.D. *LTE Technical Expert, PA FirstNet*

Brian Melcer. *Program Manager, Mission Critical Partners*

Fred McMullen, MS. *Warning Coordination Meteorologist, National Weather Service – Pittsburgh*

David Nitsch, MPH, NRP. *Director/Bureau of Technological Hazards, Pennsylvania Emergency Management Agency*

Nora O'Brien, MPA, CEM. *Chief Executive Officer, Connect Consulting Services, Inc*

Jerome Ozog, MPA, EFO, MEP. *Executive Director, Pennsylvania Fire and Emergency Services Institute*

George Palmer. *Executive Director, The Center for Independent Living of South Central PA*

Mark Passmore. *Individual Assistance Branch Chief, Alaska Division of Homeland Security & Emergency Management*

Mark Perkins. *Vice President/Direct Lifecycle Management Services Operations, Mission Critical Partners*

Derek Rowan. *President, Ascentra*

Neal Scott, Maj. (Ret). *Public Safety SME, PA FirstNet*



Patrick Shull. Director/Safety, Security and Risk Assessment, Harrisburg Property Services LLC

Matt Steinbugl, BS. Meteorologist, National Weather Service - State College

Steve Sutch. Security Coordinator/Planner, Pearsco Solutions

Christopher Tantlinger, BS. Deputy Emergency Management Coordinator, Westmoreland County Department of Public Safety

MaryAnn Tierney. Region III Administrator, Federal Emergency Management Agency

Dyana Thompson, BA. Mercer County EBH Coordinator, Mercer County Behavioral Health Commission, Inc.

Amy Wasko, BS. Public Health Program Administrator, PA Department of Health

Brandon Wattai, BS. EMT-P. Program Supervisor Life Lion EMS Community Paramedicine, Penn State Health Milton S. Hershey Medical Center

Rich Wilson. Vice President/Director of Volunteerism, Pennsylvania Volunteers Inc.

Robyn Wolfe. Emergency Management Student, Pennsylvania College of Technology

ALLEGHENY AD SERVICE, INC.

www.AlleghenyAd.com
37 McMurray Road
Building 2, Suite 2100
Pittsburgh, PA 15241
412-257-8680
Orders@AlleghenyAd.com

Anything you can put your logo on!

Family Owned and Operated Since 1971

PROMOTE YOUR BUSINESS WITH CUSTOM PRINTED PRODUCTS

CUSTOM EMBROIDERY

Custom Screen Printing

Corporate Branding • Promotional Items
Decorated Apparel • Company Stores
Fire Resistant (FR) Clothing & Safety Products

Be a part of the fun in 2020!

In March of 2018, KEMA decided to fill the void created when PEMA opted to not support an annual conference. Amazingly, the Inaugural Conference was planned, coordinated, and pulled off in just 7 months.

Even though it is just our second year, we have grown tremendously and expect to do so for next year. We need help to make sure the conference continues its quality during this growth. Please consider joining the Conference Committee.

We will need people to assist with planning, vendor relations, general outreach, and then operating the conference itself.

Send an e-mail to Conference@KEMA-PA.org and be a part of the fun!



33rd Annual



PITTSBURGH FIRE RESCUE & EMS EXPOSM

March 7 – 8
2020

 **MONROEVILLE
CONVENTION
CENTER**
Monroeville, PA

PLATINUM SPONSORS



HOSTED BY
Monroeville
Fire Departments



SUPPORTED BY

FIRE CHIEFS ASSOCIATION
of Allegheny County, Inc.



GOLD SPONSORS



PENNSYLVANIA ASSOCIATION
OF ARMED INVESTIGATORS





JOIN TODAY!



www.KEMA-PA.org

**Conference Snacks
Sponsored By:**



**MOTOROLA
SOLUTIONS**

Proudly supporting Pennsylvania's
emergency management agencies
for over 15 years



**KNOWLEDGE
CENTER**

www.knowledge-center.com

National Disaster Recovery Technical Assistance Consultants, Inc.

59 Court Street, Suite:200

Binghamton, NY 13901

NY, NJ, MA, PA - State Minority Business Enterprise

Small Business Firm

(607) 321-1088

jayesh@ndrtac.com

National Disaster Recovery Technical Assistance Consultants, Inc. (NDRTAC, Inc.) provides technical assistance in the form of consultant to perform Disaster Recovery Grant Management and Administration Services in support of:

- FEMA's Public Assistance (PA) Program under the Robert T. Stafford Disaster Relief and Emergency Assistance Act.
- HUD's CDBG-DR Program Support for the funds appropriated by the Disaster Relief Appropriations Act, 2013.
- Staff Augmentation

Currently Staff deployed in several states for FEMA PA Program Support.

Please thank this year's sponsors!

Ben Franklin Level Sponsors

Knowledge Center

www.knowledge-center.com

Juvaré

www.juvaré.com

Basic Level Sponsors

Ascentra

www.ascentra.com

Centre Communications

www.centre-com.com

Delta Development Group, Inc.

www.deltaone.com

IamResponding.com

www.iamresponding.com

MCM Consulting Group, Inc.

www.mcmconsultinggrp.com

OnSolve

www.onsolve.com

**Pennsylvania Emergency
Management Agency**

www.pema.pa.gov

Salamander

www.salamanderlive.com



ADDRESS

235 Peachtree Street NE
Suite 2300
Atlanta, GA 30303

PHONE

866.200.0165

EMAIL

INFO@JUVARE.COM

WWW.JUVARE.COM

**Conference Bags
Sponsored By:**



MissionCriticalPartners



www.KEMA-PA.org

Are you ready for #KEMACON2020?

Save the dates: **October 24, 25, 26, & 27, 2019**

Your read that right . . . **FOUR** days for 2020. Meet us at the Blair County Convention Center in Altoona for the 3rd Annual KEMA Emergency Preparedness Conference.

Important dates for **#KEMACON2020**:

Theme contest ends	11/15/2020
Theme chosen and announced	by 11/30/2020
Call for Presentation accepted	12/2/2019 to 3/20/2020
Conference Sponsors & Exhibitors – Early Bird	12/30/2020
Conference Sponsors & Exhibitors – Regular	3/2/2020
Presentations chosen and speakers notified	4/3/2020
Early bird registration starts	4/27/2020
Regular registration starts	6/19/2020
Conference Book listing/Ad Deadline	9/1/2020
Late registration starts	9/15/2020
Conference	10/24, 25, 26, & 27, 2020

Information printed (dates, location, etc.) is accurate as of 10/7/2019 but is subject to change. All changes will be posted on the KEMA Conference Website

www.KEMACONference.com

WIN A COMPLIMENTARY REGISTRATION TO #KEMACON2020!

Do you have a great idea for next year's conference theme? If you do, it could win you a complimentary registration to the 3rd Annual KEMA Emergency Preparedness Conference!

Go to <http://bit.ly/KEMA2020Theme> and enter your theme idea.

- Only one (1) submission per person.
- Any member of the KEMA Conference Committee or Executive Board are not eligible.

Thank you for attending #KEMACON2019, without **YOU**, this event would not have been a success! **See you next year!**